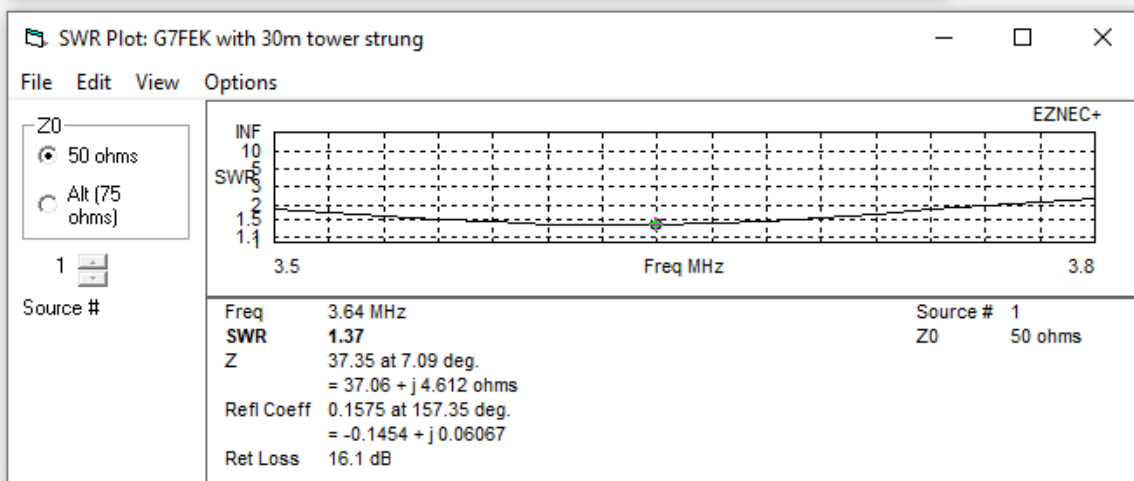
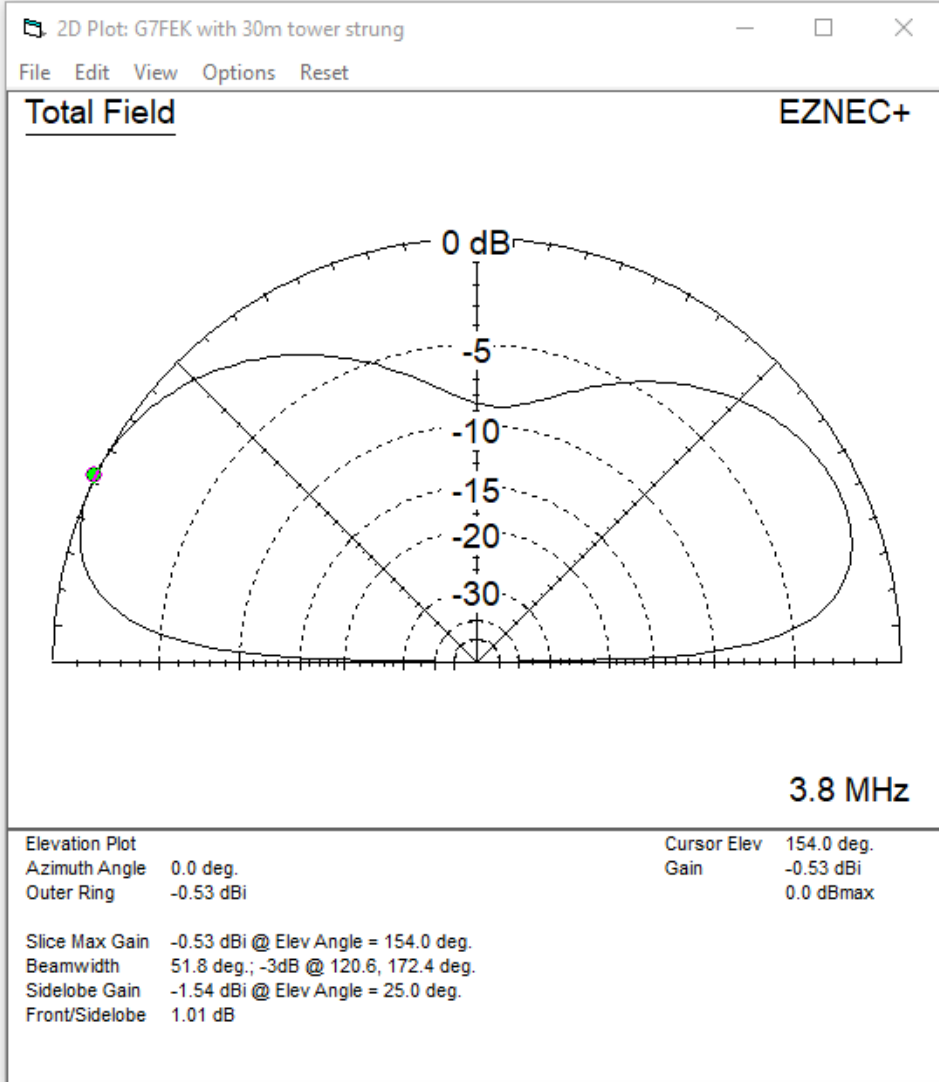
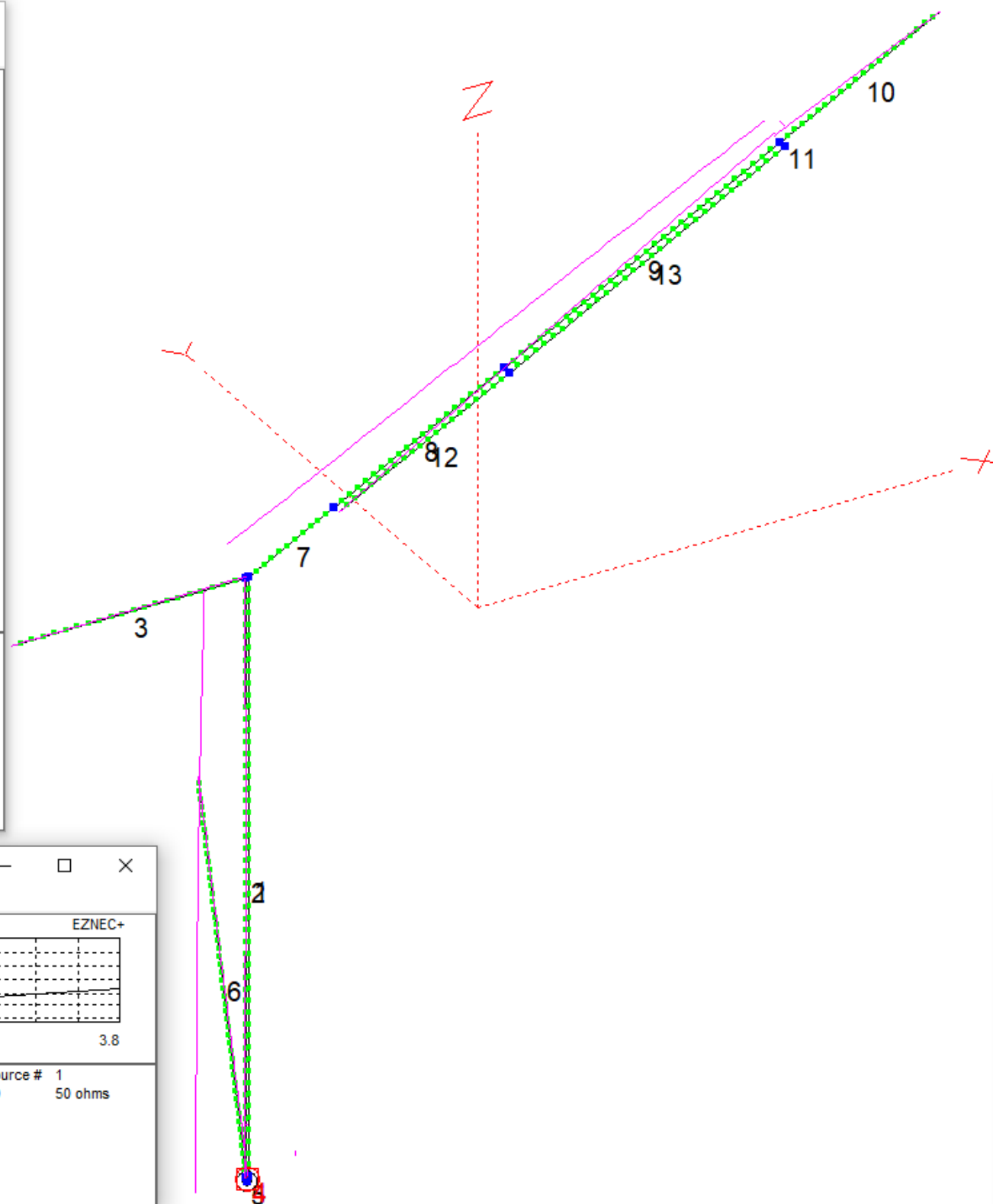

 Center Ant Image


Wire Number 4
Length 0.03048 m
Seg Length 0.03048 m
Diameter 1.5 mm
Insulated



G7FEK with 30m tower strung	
File	G7FEK 30m and tower strung.ez
Frequency	3.8 MHz
Wavelength	78.8928 m
Wires	13 Wires, 313 segments
Sources	1 Source
Loads	1 Load
Trans Lines	0 Transmission Lines
Transformers	0 Transformers
L Networks	0 L Networks
Ground Type	Real/MININEC
Ground Descrip	1 Medium (0.01, 14)
Wire Loss	Copper
Units	Meters
Plot Type	Elevation
Azimuth Angle	0 Deg.
Step Size	1 Deg.
Ref Level	0 dBi
Alt SWR Z0	75 ohms
Desc Options	