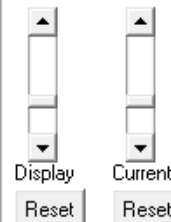
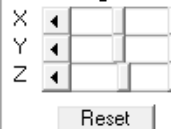
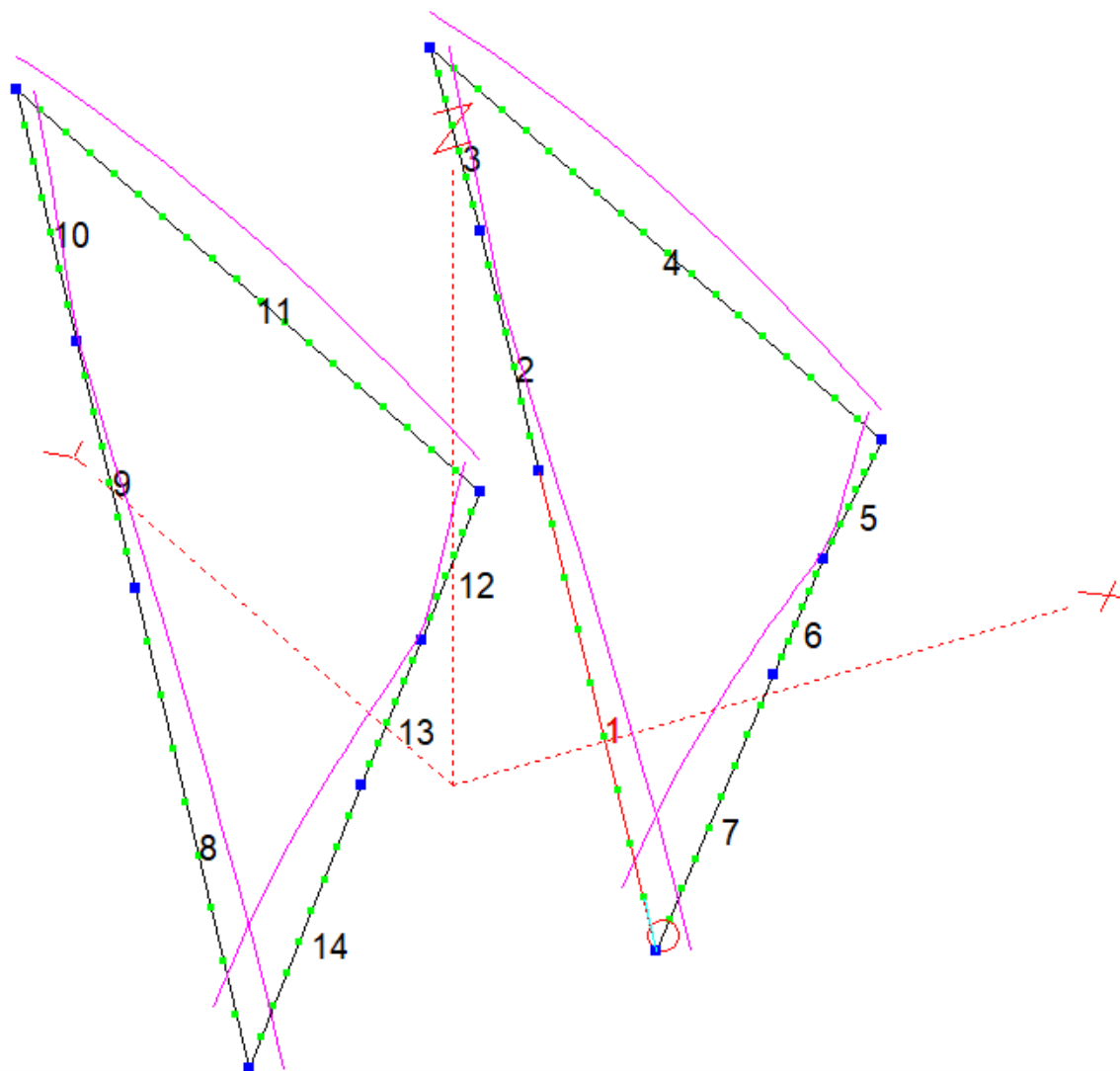


Zoom



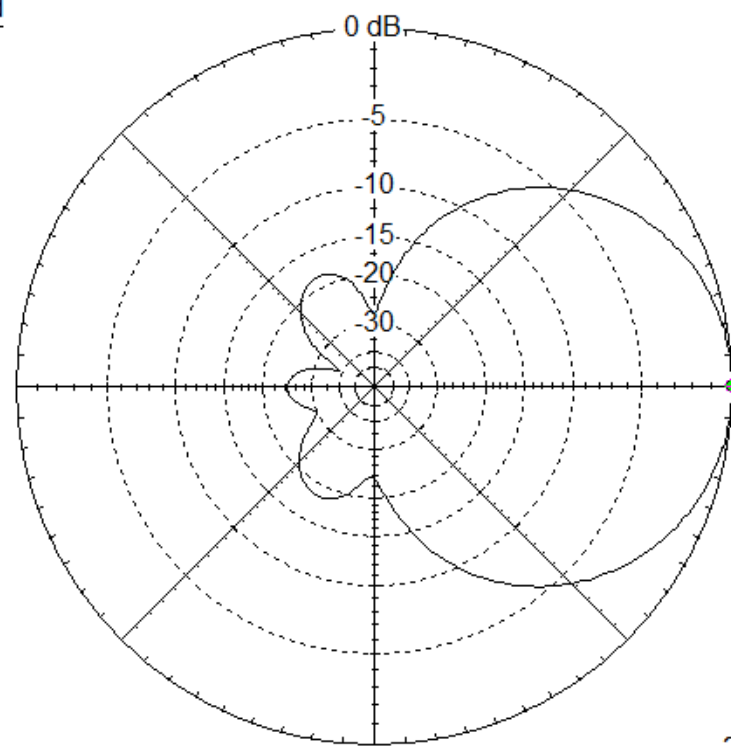
Move Image

 Center Ant Image

2D Plot: Vortex 10m2 delta heavy

File Edit View Options Reset

Total Field



EZNEC+

28.45 MHz

Azimuth Plot
Elevation Angle 0.0 deg.
Outer Ring 7.4 dBi

Cursor Az 0.0 deg.
Gain 7.4 dBi
0.0 dBmax

Slice Max Gain 7.4 dBi @ Az Angle = 0.0 deg.
Front/Back 24.33 dB
Beamwidth 75.7 deg.; -3dB @ 322.0, 37.7 deg.
Sidelobe Gain -10.91 dBi @ Az Angle = 242.0 deg.
Front/Sidelobe 18.31 dB

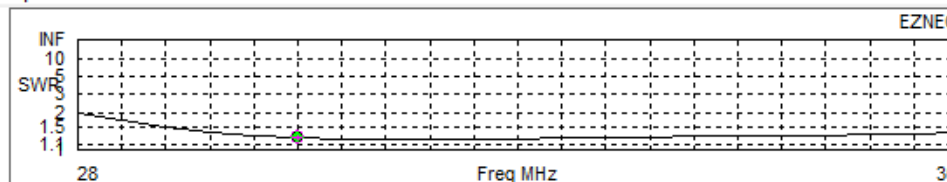
Wire Number 1
Length 1.93322 m
Seg Length 0.214802 m
Diameter 20 mm

SWR Plot: Vortex 10m2 delta heavy

File Edit View Options

Z0
 50 ohms
 Alt (105 ohms)

1
Source #



Parameter	Value	Source #
Freq	28.5 MHz	1
SWR	1.24	Z0 105 ohms
Z	104.6 at -12.32 deg. = 102.2 - j22.31 ohms	
Refl Coeff	0.1079 at -91.12 deg. = -0.002117 - j0.1079	
Ret Loss	19.3 dB	

EZNEC+ v. 5.0

File Edit Options Outputs Setups View Utilities Help

Open
Save As
Ant Notes
Currents
Src Dat
Load Dat
FF Tab
NF Tab
SWR
View Ant

NEC-2
FF Plot

Vortex 10m2 delta heavy	
File	Vortex_10m2_delta_loop_HD.EZ
Frequency	28.45 MHz
Wavelength	10.5375 m
Wires	14 Wires, 130 segments
Sources	1 Source
Loads	0 Loads
Trans Lines	0 Transmission Lines
Transformers	0 Transformers
L Networks	0 L Networks
Ground Type	Free Space
Wire Loss	Aluminum (6061-T6)
Units	Meters
Plot Type	Azimuth
Elevation Angle	0 Deg.
Step Size	1 Deg.
Ref Level	0 dBi
Alt SWR Z0	105 ohms
Desc Options	