

File Edit View Options Reset

Zoom

Display Current

Reset Reset

Move Image

X Y Z

Reset

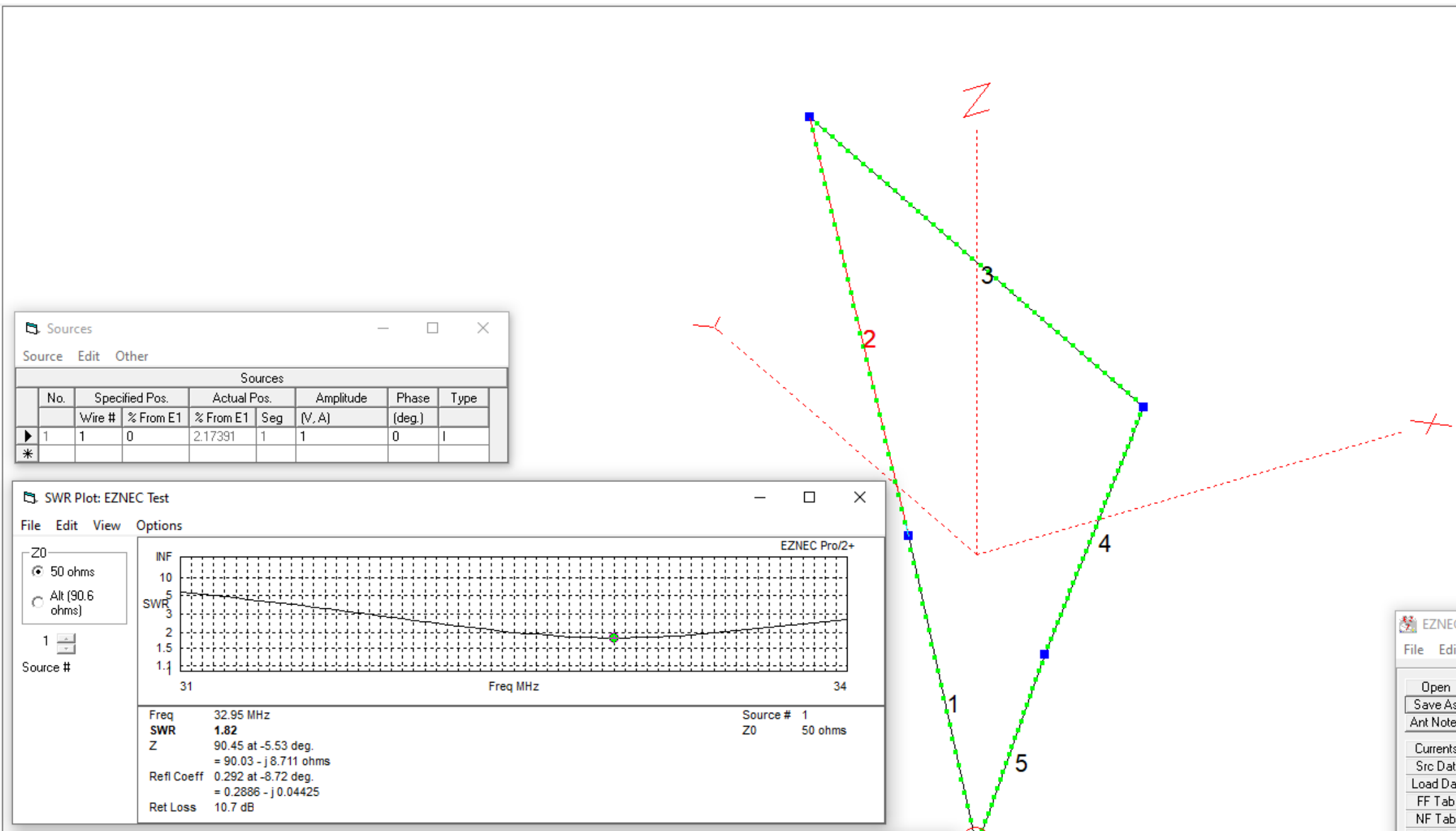
Center Ant Image

Mouse Operation

Normal Viewing

Add Conn Wires

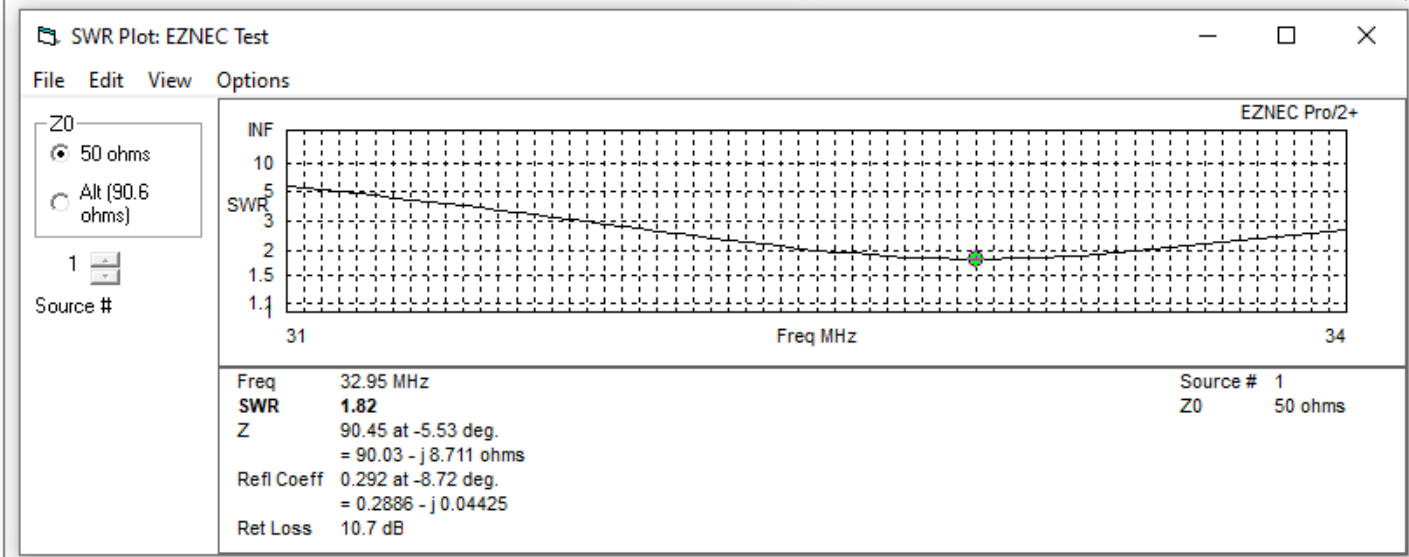
Move Wire Ends



Sources

Source Edit Other

Sources								
No.	Specified Pos.	Actual Pos.		Amplitude	Phase	Type		
	Wire #	% From E1	% From E1	Seg	(V, A)	(deg.)		
▶ 1	1	0	2.17391	1	1	0	I	
*								



Wires

Wire Create Edit Other

Coord Entry Mode Preserve Connections Show Wire Insulation Show Loss

No.	End 1				Conn	End 2				Diameter (mm)	Segs	Insulation		
	X (m)	Y (m)	Z (m)			X (m)	Y (m)	Z (m)	Conn			Diel C	Thk (mm)	Loss Tan
1	-1.86	0	1		W5E2	-1.86	0.622016	2.32087	W2E1	16	23	1	0	0
▶ 2	-1.86	0.622016	2.32087		W1E2	-1.86	1.52	4.07	W3E1	12	31	1	0	0
3	-1.86	1.52	4.07		W2E2	-1.86	-1.52	4.07	W4E1	2	43	1	0	0
4	-1.86	-1.52	4.07		W3E2	-1.86	-0.622016	2.32087	W5E1	12	31	1	0	0
5	-1.86	-0.622016	2.32087		W4E2	-1.86	0	1	W1E1	16	23	1	0	0
*														

EZNEC Pro/2+ v. 7.0

File Edit Options Outputs Setups View Utilities Help

Open Save As Ant Notes

Currents Src Dat Load Dat FF Tab NF Tab SWR View Ant

NEC-2D FF Plot

EZNEC Test	
File	EZNEC Test.EZ
> Frequency	32.95 MHz
Wavelength	9.09841 m
> Wires	5 Wires, 151 segments
> Sources	1 Source
> Loads	0 Loads
> Trans Lines	0 Transmission Lines
> Transformers	0 Transformers
> L Networks	0 L Networks
> Y Param Networks	0 Y Param Networks
> Ground Type	Real/High Accuracy
> Ground Descrip	1 Medium (0.005, 13)
> Wire Loss	Aluminum (6061-T6)
> Units	Meters
> Plot Type	Azimuth
> Elevation Angle	0 Deg.
> Step Size	1 Deg.
> Ref Level	0 dBi
> Alt SWR Z0	90.6 ohms
> Desc Options	
> Gnd Wave Dist	OFF